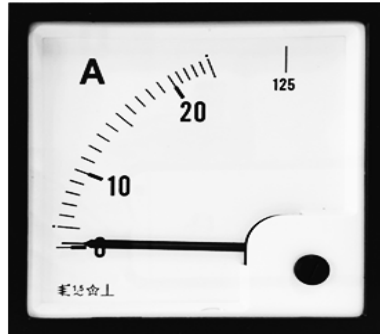


**AMPEROMETRI e VOLTMETRI ELETTRICOMAGNETICI per C.A.**  
Caratteristiche generali

**A.C. MOVING IRON AMMETERS and VOLTMETERS**  
General features

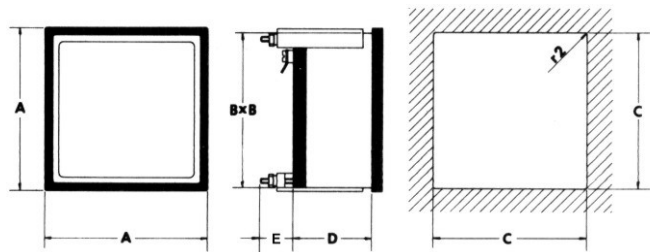


**Scala / Scale 90°**

Costruiti secondo norme CEI e IEC / Made according to CEI and IEC  
 Precisione:  $\pm 1,5\%$  del valore di fondo scala (temperatura di riferimento 20°C)  
 Accuracy:  $\pm 1,5\%$  of full scale value (reference temperature 20°C)  
 Tensione di esercizio: 600V / operating voltage: 600V  
 Tensione di prova: 2kV per 1' a 50Hz / test voltage: 2kV for 1' 50Hz  
 Frequenza: 40 ... 60Hz / Frequency: 40 ... 60Hz  
 Autoconsumo: amperometri  $\leq 1,1VA$  circa, voltmetri  $\leq 3VA$  circa  
 Consumption: ammeters  $\leq 1,1VA$  about, voltmeters  $\leq 3VA$  about  
 Custodia in materiale plastico non infiammabile, UL94 V-0 / Non-flammable plastic material case, UL94 V-0



**DIMENSIONI D'INGOMBRO / OVERALL DIMENSIONS**



Modello Model	A	B	C	D	E	Peso Weight
	[mm]	[mm]	[mm]	[mm]	[mm]	[kg]
<b>EM72Q</b>	72	67	68	44	18	0,2
<b>EM96Q</b>	96	91	92	44	18	0,3

Amperometri per inserzione diretta o su TA Ammeters for direct insertion or on CT		
portata diretta o su TA/5 o /1 direct range or on CT/5 or /1	scala normale normal scale	scala estesa 3In over scale 3In
[A]	[A]	[A]
1	0 ... 1	0 ... 1 (3)
1,5	0 ... 1,5	0 ... 1,5 (4,5)
3	0 ... 3	0 ... 3 (9)
5	0 ... 5	0 ... 5 (15)
7,5	0 ... 7,5	0 ... 7,5 (22,5)
10	0 ... 10	0 ... 10 (30)
15	0 ... 15	0 ... 15 (45)
20	0 ... 20	0 ... 20 (60)
25	0 ... 25	0 ... 25 (75)
30	0 ... 30	0 ... 30 (90)
50	0 ... 50	0 ... 50 (150)
da / from 10/5 a / to 10.000/5	0 ... 10 0 ... 10k	0 ... 10 (30) 0 ... 10k (30k)
da / from 10/1 a / to 10.000/1	0 ... 10 0 ... 10k	0 ... 10 (30) 0 ... 10k (30k)

Voltmetri per inserzione diretta o su TV Voltmeters for direct insertion or on VT	
portata diretta o su TV direct range or on VT	scala normale normal scale
[V]	[V]
40	40
60	60
100	100
150	150
250	250
300	300
500	500
600	600
220/100 o / or 220/110	300
380/100 o / or 380/110	500
400/100 o / or 400/110	500
500/100 o / or 500/110	600
xxx/100	xxx
xxx/110	xxx